

Hour meter

HK 30



Highlights

- price competitive meter
- excellent quality
- long lifetime
- different models for different markets
- all necessary approvals
- your branding available

Applications

- gen-sets
- compressors
- pumps
- medical equipment
- control panels
- air conditioning

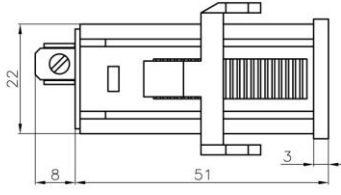
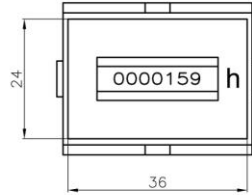
Mechanical data	
Front dimension:	36 x 24 mm (standard)
Display	AC: 5 integers, 2 decimals DC: 6 integers, 1 decimal without reset
Digit height	4 mm
Digit color	integer: white on black decimal: 50 Hz – red on black 60 Hz – black on white
Counting range	AC: 99999,99 h, DC: 999999,9 h
Reading accuracy	AC: 1/100 h (36 sec) DC: 1/10 h (6 min)
Weight	ca. 32 g
Housing color	standard black transparent on request
Bezels for 36x24 mm	48x24, 48x48, 54x29, 55x55, Ø 58, Ø 72, 72x72 mm
Mounting options	D – DIN housing E – 48x48 DIN case G – front 36x24mm with retainer R – front 40,6x27,5mm (1,60x1,08") with retainer S – 2-screw front 52x26mm (2,05x1,03")

Electrical data	
Operating voltage	24, 48, 60, 110, 120, 220, 230, 240, 400 VAC ± 10%, 50 or 60 Hz
Current consumption	6-12, 12-36, 36-80, 110, 220 VDC ± 10% AC: max. 8 mA DC: max. 9 mA
Accuracy	AC: ± 0,02 % DC: ± 0,002 %
Connection	flat pin 6,3x0,8 with screw flat pin 6,3x0,8
Ambient conditions	
Operating temperature	AC: -25° C .. +70° C DC: -10° C .. +55° C
Storage temperature	AC: -40° C .. +70° C DC: -20° C .. +70° C
Relative humidity	max. 80% at +25° C
Protection	IP40 front IP67 front (transparent housing) IP67 totally sealed housing IP00 terminals
Approvals	CE Mark UL E171200 RoHS compliant

Ordering **HK 30 . xx / xxx / xx**

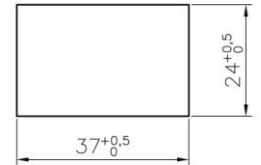
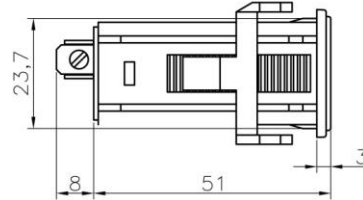
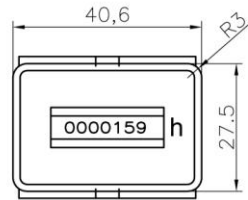
Mounting	Bezel for 36x24 front	Protection	Connection	Package	Voltage (specify)	Frequency
D – DIN housing	0 - none	1 – IP40 front	1 – flat pin 6,3x0,8 with screw	P – single	24, 48, 60, 110, 120,	50 Hz
E – 48x48 DIN case	1 – 48x24 mm	2 – IP67 front	2 – flat pin 6,3x0,8	S – group	220, 230, 240, 400 VAC	60 Hz
G – front 36x24mm with retainer	2 – 48x48 mm	3 – IP67 total			6-12, 12-36, 36-80, 110,	
R – front 40,6x27,5mm (1,60x1,08") with retainer	3 – 54x29 mm				220 VDC	
S – 2-screw front 52x26mm (2,05x1,03")	4 – 55x55 mm					
	5 – Ø58 mm					
	6 – Ø72 mm					
	7 – 72x72 mm					

Hour meter



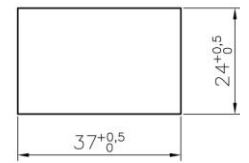
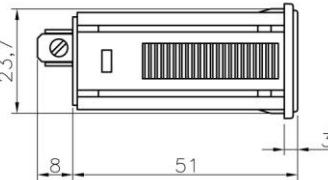
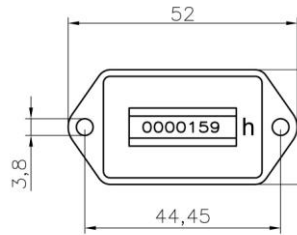
HK 30 – mounting G

Panel cut-out



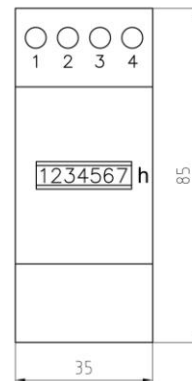
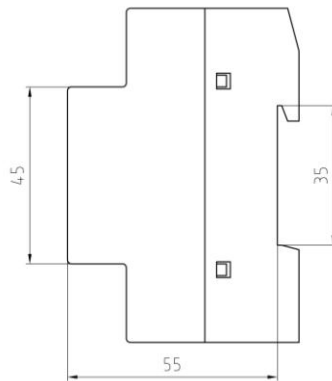
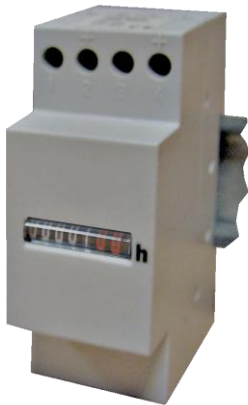
HK 30 – mounting R

Panel cut-out

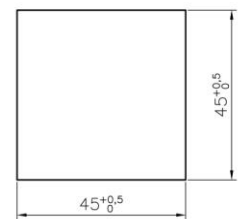
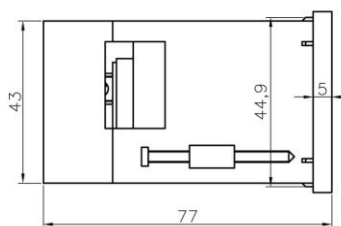
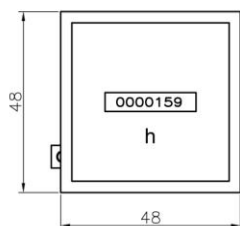


HK 30 – mounting S

Panel cut-out



HK 30 – mounting D

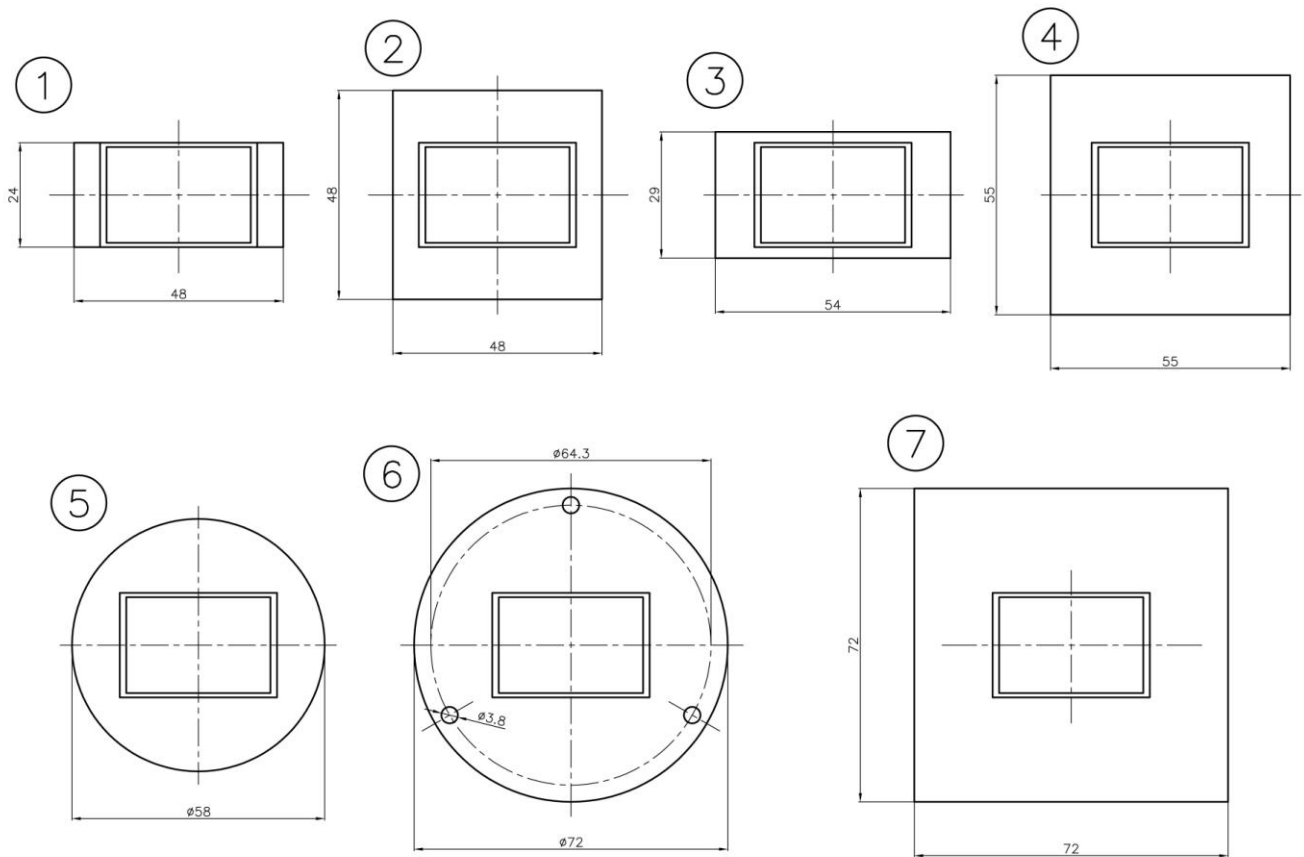


HK 30 – mounting E

Panel cut-out

Hour meter

HK 30 bezels – for 36x24 mm front meter



Bezel No.	Bezel size	Panel cut-out	Retainer size
1	48 x 24 mm	45 x 22 mm	standard
2	48 x 48 mm	45 x 45 mm	bigger
3	54 x 29 mm	50 x 25 mm	standard
4	55 x 55 mm	45 x 45 or $\Phi 50$ mm	bigger
5	$\Phi 58$ mm	$\Phi 50$ mm	bigger
6	$\Phi 72$ mm	min. $\Phi 50$ mm	standard
7	72 x 72 mm	45 x 45 or $\Phi 50$ mm	bigger