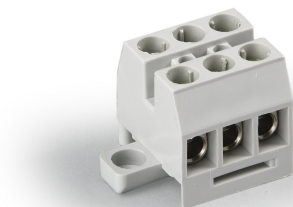


ENSTO

KR8031

Terminal block

Code	KR8031
GTIN	6418677111778
Name	Terminal block Ensto Clampo Compact 3-pole with wire protection, Cu 6 mm ² , 750 V
Description	Ensto Clampo Compact terminal blocks are ideal for use in applications with limited space available. Due to their compact design, compact terminal blocks can be installed quickly, either directly onto a base or onto DIN 15 or DIN 35 mounting rails.
Vendor	Ensto Finland Oy



Technical specification

Material

Housing: Polyamide

Colors

Color: Grey

Certificates

Standards: UL 1059, EN 60947-7-1, CSA C22.2 No. 158-1987

UL File no.: E192532, E192532

US specific

Maximum voltage: 150 V

Dimensions

Conductor cross-section:	6
Conductor size:	43330
Net Weight:	0.016 kg
Size:	32.5 x 22 x 22
Volume :	4851 cm ³

Weight: 0.02 kg

Temperatures

Max. operating temperature: 105 °C

Features

Mounting: DIN rail

Number of poles: 3

Screw head: Slothead

Mechanical

Tightening torque Nm: 0.8 Nm

Electrical values

Nominal current A: 41 A

Nominal insulation voltage: 450 V

Pollution degree: 3

ETIM 7

Etim

Closing plate required: False

Colour: Grey

Connectable conductor cross section fine-strand with cable end sleeve: 1.5 ... 4 mm²

Connectable conductor cross section fine-strand without cable end sleeve: 1.5 ... 4 mm²

Connectable conductor cross section multi-wired: 1.5 ... 6 mm²

Connection position: Sideways

Explosion-tested version 'Ex e': False

Height at lowest possible mounting height: 22 mm

Inflammability class of insulation material acc. with UL94: V2

Length: 22 mm

Material insulation body: Thermoplastic

Mounting method: DIN rail (top hat rail) 15 mm

Number of clamp positions per level: 3

Number of levels: 1

Operation temperature: ≥ 105

Rated current I_n: 41 A

Rated voltage: 450 V

Type of electrical connection 1: Screw connection

Type of electrical connection 2: Screw connection

Width/grid dimension: 31.4 mm

Packaging

Pallet package

Unit:	PCE
Package size:	21000
Depth:	1200 mm
Width:	800 mm
Height:	890 mm

Default package

Unit:	PCE
Package size:	200
Depth:	218 mm
Width:	218 mm
Height:	126 mm
Weight:	3.332 kg
Volume:	5.988024 l