

ENSTO

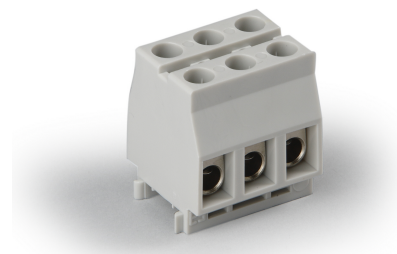
KR10031

Terminal block

Code KR10031
 GTIN 6418677111358
 Name Terminal block Ensto Clampo Compact
 3-pole with wire protection, Cu 16 mm²,
 750 V

Description Ensto Clampo Compact terminal blocks are ideal for use in applications with limited space available. Due to their compact design, compact terminal blocks can be installed quickly, either directly onto a base or onto DIN 15 or DIN 35 mounting rails.

Vendor Ensto Finland Oy



Technical specification

Material

Housing: Polyamide

Colors

Color: Grey

Certificates

Standards: EN 60998-1, CSA C22.2 No. 158-1987, UL 1059, EN 60998-2-1

UL File no.: E192532, E192532

US specific

Maximum voltage: 300 V

Dimensions

Conductor cross-section: 16

Conductor size: 43269

Size: 44.7 x 30.5 x 39

Volume : 5.32 cm³

Weight: 0.07 kg

Features

Mounting:	DIN rail
Number of poles:	3
Screw head:	Slothead

Mechanical

Tightening torque Nm:	2.5 Nm
-----------------------	--------

Electrical values

Nominal current A:	82 A
Nominal insulation voltage:	750 V
Pollution degree:	2

ETIM 7

Etim

Closing plate required:	False
Colour:	Grey
Connectable conductor cross section fine-strand with cable end sleeve:	6 ... 10 mm ²
Connectable conductor cross section fine-strand without cable end sleeve:	6 ... 10 mm ²
Connectable conductor cross section multi-wired:	6 ... 16 mm ²
Connection position:	Sideways
Explosion-tested version 'Ex e':	False
Height at lowest possible mounting height:	39.5 mm
Inflammability class of insulation material acc. with UL94:	V2
Length:	30.8 mm
Material insulation body:	Thermoplastic
Mounting method:	DIN rail (top hat rail) 15 mm
Number of clamp positions per level:	3
Number of levels:	1
Operation temperature:	≥ 105
Rated current I _n :	82 A
Rated voltage:	750 V
Type of electrical connection 1:	Screw connection
Type of electrical connection 2:	Screw connection
Width/grid dimension:	45.3 mm

Packaging

Default package

Unit:	PCE
Package size:	100
Depth:	269 mm

Width:	180 mm
Height:	113 mm
Volume:	5.47146 l