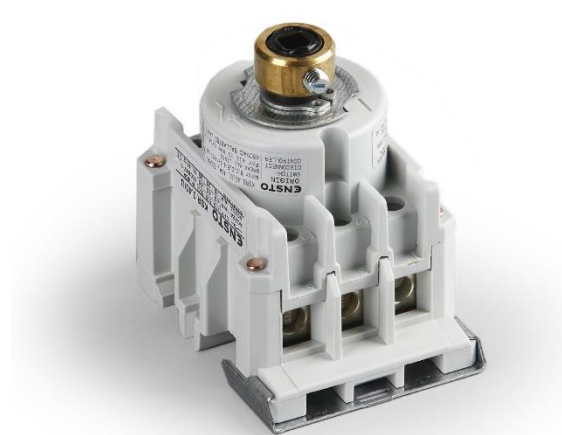


UL-LISTED MANUAL MOTOR CONTROLLERS END-OF-LIFE ANNOUNCEMENT

Ensto announces the end of life of the Ensto Origin UL-listed manual motor controllers. Ensto manual motor controllers are tested according to UL 508 and do not comply with the requirements of the new standard UL 60947-4-1. Though we have been able to continue sales with the old certificate we are no longer able to make any product changes. We are not able to remove cadmium from the products which is on both REACH and ROHS lists and the products do not comply with Ensto's environmental policy.

This announcement applies to all product items in the series including related accessories. The last day to order these products is June 30th 2019. List of affected products is attached.

End-of-life milestone schedule:



Milestone	Definition	Date
End-of-life announcement	The date the document that announces the end of sale and end of life of a product is distributed.	January 24, 2019
End-of-sale date	The last date to order the product through Ensto. The product is no longer for sale after this date.	June 30 th , 2019
Last Shipment Date	The last-possible shipping date that can be requested of Ensto.	July 31 st , 2019

Porvoo, 24.1.2019

Riitta Seeck
Product Manager, Connectivity
Ensto Smart Buildings

Ensto Finland Oy
Ensio Miettisen katu 2, P.O. Box 77
06101 Porvoo, Finland

Product list:

Product code	Description
UL-listed manual motor controllers	
KSR3.40/U	Rotary Switch 40A
KSR3.401/U	Rotary switch, 40A, Collar
KSR3.402/U	Rotary Switch 40A, hex socket
KSR3.60/U	Rotary Switch 60A
KSR3.601/U	Rotary Switch 60A, Collar
KSR3.602/U	Rotary switch, 60 A, hex socket
KSR3.80/U	Rotary Switch 80A
KSR3.801/U	Rotary Switch 80A, Collar
KSR3.802/U	Rotary Switch, 80 A, hex socket
KSR3.100/U	Rotary Switch 100A
KSR3.1001/U	Rotary Switch 100A, Collar
KSR3.1002/U	Rotary Switch 100A, hex socket
KSR3.125/U	Rotary Switch 125A
KSR3.1251/U	Rotary switch 125A, Collar
KST3.40/U	Toggle Switch 40A
KST3.60/U	Toggle Switch 60A
KST3.80/U	Toggle Switch 80A
KST3.100/U	Toggle switch
Handles	
KK57.18/U	Direct handle, Black
KK57.19/U	Direct handle, black/grey
KK57.37/U	Direct handle, black
KK57.182/U	Direct handle, Y/R
KK57.192/U	Direct handle, Y/R
KK57.372/U	Direct handle, Y/R
KK29/U	External Handle, 1/0
KSH48.01/U	Handle Black, TYPE 12,13,4X
KSH48/U	Handle R/Y, Type 12,13,4X
KSH75/U	Pistol Grip Handle Black, Type 4X
KSH75RY/U	Pistol Grip Handle R/Y, Type 4X
PMR716.1/U	Handle shaft guide replacement

Product code	Description
Extension shafts	
KK31.040/U	Extension Shaft L=40
KK31.050/U	Extension shaft L=50
KK31.055/U	Extension shaft L=55
KK31.060/U	Extension shaft L=60
KK31.070/U	Extension shaft L=70
KK31.080/U	Extension shaft L=80
KK31.090/U	Extension Shaft L=90
KK31.100/U	Extension Shaft L=100
KK31.105/U	Extension shaft L=105
KK31.110/U	Extension Shaft L=110
KK31.120/U	Extension Shaft L=120
KK31.130/U	Extension shaft L=130
KK31.140/U	Extension Shaft L=140
KK31.150/U	Extension Shaft L=150
KK31.170/U	Extension Shaft L=170
KK31.175/U	Extension shaft L=175
KK31.180/U	Extension Shaft L=180
KK31.200/U	Extension Shaft L=200
KK31.300/U	Extension Shaft L=300
KK31.305/U	Extension Shaft L=305
Other accessories	
KK102.712/U	Change-over kit incl. shafts and black handle
KK102.7RY12/U	Change-over mechanism R/Y
KK38.1/U	Auxiliary contact
KK38.2/U	Auxiliary contact
KK39.1/U	Auxiliary Contact
KK39.2/U	Auxiliary Contact
KSRD3	Accessory for Ensto Origin switches
KK20.2/U	Shaft Retaining Collar
KK20/U	Shaft Retaining Collar
PMR333.10/U	Cover plate for toggle switch
PMR334.10/U	Cover plate for toggle switch
PMR598/U	Cover plate for toggle switch